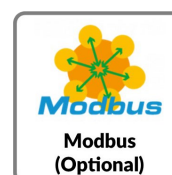
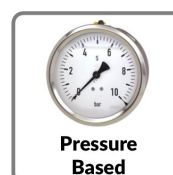
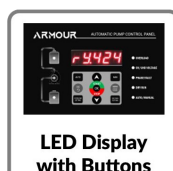
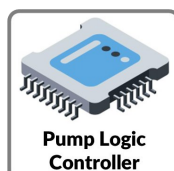
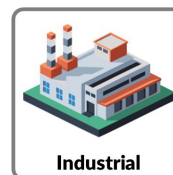


The ARMOUR Model D—Basic is an economical, Star Delta contactor-based pump control panel designed to operate one pump automatically or manually with built-in motor protection. It helps save water and electricity by preventing dry running, overflow, and unnecessary pump operation through smart automation.



Applications:



Configuration	1 Working Pump	Features
Operating Voltage	415V / 3PH / 50Hz	Automatic pump operation based on water level
Power rating	Up to 7.5HP	Manual operation based on user input
Dimensions	345 x 330 x 140 MM <i>Onwards</i>	Pump ON / OFF Timer
Modbus Connectivity	Optional	Display of Live Voltage & Current on all 3 Phases
Components		Display of pump running status
MS Enclosure	Compact Black	Display of Voltage & Current Faults
Electronic controller with Power Relays	●	Display of total pump run time
LED Display with Buttons & Indication LEDs	●	Display of water level in Underground & Overhead Tank
Contactors	●	Pump & Motor Protections
Star Delta Timers	●	Overload protection
Transformer	●	Dry run protection
Terminal Blocks, Accessories, Wiring	●	Over voltage protection
LED Indication Lamps (Start/Trip)	●	Under voltage protection
Selector Switches (Auto/Bypass)	●	Phase loss protection
Selector Switches (Pump 1 / Off / Pump 2)	●	Phase imbalance protection
Overload Relays	●	Phase reversal protection
Main Incomer MCB	●	Level based pump cutoff in Manual mode
Separate Pump MCB	●	