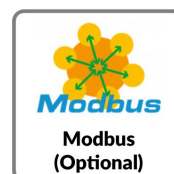
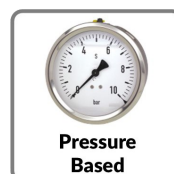
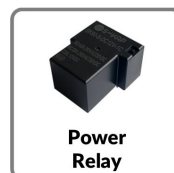
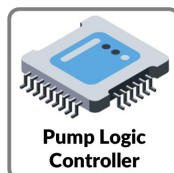
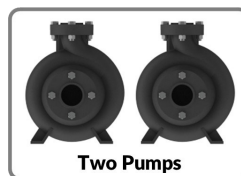


The ARMOUR Model E—Basic is our most economical pump control panel for Single Phase Pumps, designed to operate a one or two pumps automatically or manually with built-in motor protection. It helps save water and electricity by preventing dry running, overflow, and unnecessary pump operation through smart automation.



Applications:



Configuration
Operating Voltage
Power rating
Current rating
Dimensions
Weight
Max. Voltage Range
Max Current Range
Modbus Connectivity
Components
MS Enclosure
Electronic controller with Power Relays
LED Display with Buttons & Indication LEDs
Transformer
Terminal Blocks, Accessories, Wiring
Type of Pumps Supported
Monoblock Pump
Openwell Submersible Pump
Borewell Submersible Pump

1W / 1W+1S Pumps
230V / 1PH / 50Hz
Up to 3HP
Up to 30 Amps
250 x 270 x 80 MM <i>onwards</i>
< 2 KGs
250VAC / 1PH / 50Hz
40 Amps
Optional
Compact Black
●
●
●
●
●
●
●
●
●

Features
Automatic pump operation based on water level
Manual operation based on user input
Pump ON / OFF Timer
Display of Live Voltage & Current on all 3 Phases
Display of pump running status
Display of Voltage & Current Faults
Display of total pump run time
Display of water level in Underground & Overhead Tank
Pump & Motor Protections
Overload protection
Dry run protection
Over voltage protection
Under voltage protection
Phase loss protection
Phase imbalance protection
Phase reversal protection
Level based pump cutoff in Manual mode